

Management Methods and Tools for Complex Development Programs

Quantitative Management Consulting

- **CONSULTING and TOOLS For Program Managers, PMO, NPI, Finance, DevLeads, Product Management, Support Logistics, IT Managers.**
- Material Planning and Execution for Operational Execution plus Budget Performance; Critical Path and Material for Schedule Performance.

For Everyone: Broadly Applicable Technique based on MS Office.

- **Modern Excel technique: Powerful, Flexible, Extensible**
 - Excel Structured Tables, INDEX/MATCH, SUMIF, Structured Keys.
- **Pivot Tables Organize and Simplify Data into Information**
 - Normalization and UnPivot of input data– Way beyond the usual training on pivot UI.
- **Database Magnifies Data Effectiveness**
 - JOIN Excel tables, Drive Excel Pivot Tables from Database queries for magnification of power.
 - Microsoft Excel / Access / SQL, Plus Power BI / DAX for Reports, Dashboards and Publication.
- **Complements and Adds Power to Power BI.**
 - Overcomes Limitations to Cascaded QUERY / JOIN, Propagation of Added Fields.
- **Microsoft Project and Visio Connect and Bring Quantitative Management and Reporting Alive**
 - Project task dates connect to Excel for dynamic reporting.
 - Project task dates connect to Visio dynamic visualization to align planning and operation throughout organizations.
- **Windows-Based, VM-Capable**
 - Native Window platforms.
 - Cross-Platform MacOS / Linux via VM or RDP.

For Program Managers: Effective, Connected Planning, Execution.

- **Program Schedule Operational Planning and Execution**
 - Structured program schedules integrate Electronics, Mechanical and Software, Assembly Development, Integration, Test, NPI.
 - Manages Critical Path to maintain schedule and budget, and to manage change.
- **Program Material Organizational Operation Planning and Execution**
 - Schedule and manage provisioning and reporting of system elements, build material, consigned material.
 - Schedule and manage materials handling from Purchase Order through receipt, inventory, deployment and maintenance.
 - Program-BOM explosion manages cost rollup, special material factors (consignment etc.).
- **Dynamic Program Finance Planning and Reporting**
 - Build, refine, execute dynamic program budget driven by Schedule, Allocations and Configurations, and reporting organizational and financial metrics.
 - Propagate schedule through material planning and operation, into program Budget and Reporting.
 - Product cost development from Planning through Development.

- Electronic System Management Pattern, with concrete examples of data organization and reporting.
- Clarity in planning-to-execution, cross-functional coordination, across all management levels.
- Human-intuitive visualization connects with quantified planning for broad grasp of program planning and execution.
- Programs learn from and leverage prior effort. Data capture leverages to ISO, Learning Organization, Continuous Improvement.

Support and Access to Power Op

Requirements

- Microsoft Office (Desktop, or Office 365)
 - Excel, Access
 - Project, Visio Pro
- Optional Shared-Files on Windows Fileshare
 - Windows File-Sharing: CIFS (Win)/SMB (MacOS) File Sharing, Microsoft Groups, Microsoft Active Directory.
`\\<servername>\<path>\<filename.ext>`
`smb://<servername>/<path>/<filename.ext>`

Full-Function

- Excel, Access, MS SQL Server, Project, Visio Pro, Power BI, on:
 - Native Windows Platform.
 - Guest Windows in VM hosted on MacOS or on Red Hat, Ubuntu, CentOS Linux.
 - MacOS: Windows Guest on [VMWare Fusion](#), Fusion Pro, Workstation, Workstation Pro, Workstation Player.
 - Linux: Windows Guest on VMWare Workstation, [Workstation Pro](#), Workstation Player.
 - [Windows VM on Microsoft Azure](#), RDP
 - [AWS Elastic Compute Cloud \(EC2\)](#), RDP

Full-Function (Continued)

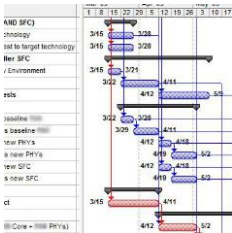
- Access to Native Windows and Cloud Platform via RDP Client.
 - RDP = Remote Desktop.
 - Linux (Red Hat, Ubuntu) from Distribution Provider: [Remmina](#), [Rdesktop](#), [RealVNC](#), [TigerVNC](#), [TightVNC](#).
 - From Windows, MacOS, iOS, Android, Chrome: [Splashtop](#), [GoToMyPC](#), [LogMeIn](#), [TightVNC](#).
 - Office License needed only on Windows Host, not RDP Clients.

Subset-Function

- Office for Mac Native on iOS.
 - Functional Excel Structured Tables, Structured Reference, Lookup Functions, Structured Keys (function like BI).
 - Excel Pivot from Server-Based Query: Can Update Filters and Pivot Structure; but No Refresh. Open Updated from Server.
 - No Excel Power Pivot or Power BI Native on iOS.
 - MS Access, Project, Visio Pro, Power BI not available Native on iOS.

Not Supported

- [MySQL](#), [PostgreSQL](#) not supported now. Could become available via Google BigQuery, CloudSQL; and site [codingisforlosers](#).
- Cloud Storage is Import/Export:
 - Passive Storage/Distribution, not Active Integration.
 - [SmartSheet \(GANTT\)](#), [Google Sheets \(Import/Export\)](#).
 - [Google Drive](#), [OneDrive](#).



Richard Bixler

Quantitative Management Consulting

- *Power Operational Intelligence – **Power Opl** Tools and Methodology*
- *Technical Program Management – Consulting and Practice*
- *System Development*

netboyz@comcast.net

www.softtoyssoftware.com

www.linkedin.com/in/rbixler

www.softtoyssoftware.com/Power_Opl/Power_Opl.pdf